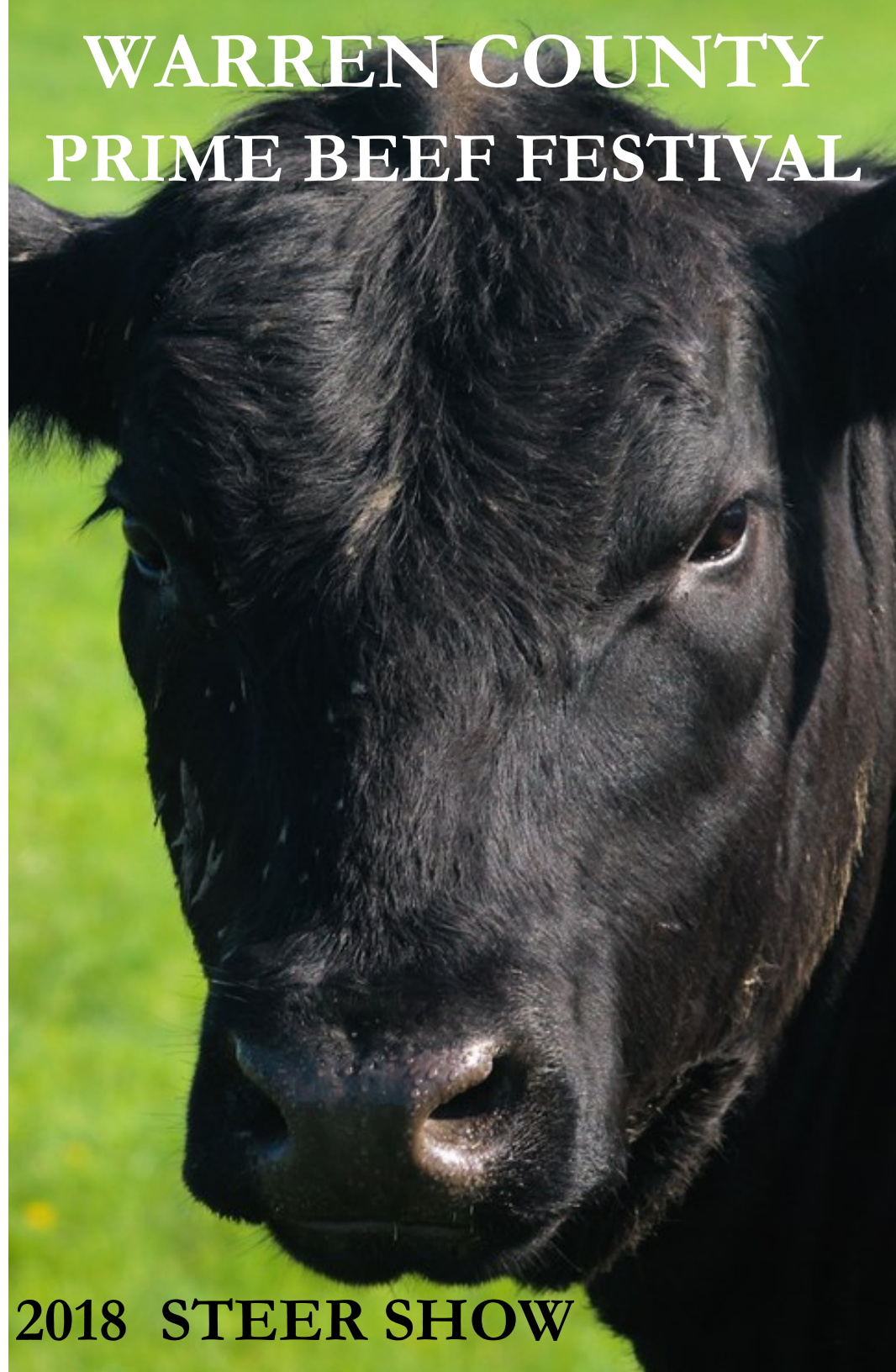


WARREN COUNTY PRIME BEEF FESTIVAL



2018 STEER SHOW

Warren County Prime Beef Festival
89 Public Square
Morrow, IL 61462



STEER SHOW

Beef Committee

Lynn Shimmin 309.426.2955

Show at the Warren County Fairgrounds in Roseville

Pen of Four Show: Thursday, September 6, 2018, at 8:30 am

Steer Show: Following Pen Show at approximately 9:00 am

Stall & Entry Fee: \$20 per single steer- excluding Festival distributed steers

1. Set-up

Monday, September 3, 2018 at 8:00 am
Warren County Fairgrounds in Roseville

2. Weigh-In

Wednesday, September 5, 2018 - 8:00 to 10:00 am
Warren County Fairgrounds in Roseville

3. Stall space will be designated by the Beef Committee.

Don't tie without approval or you may have to move.

Entry Form

Mail or Deliver to
Monmouth Area Chamber of Commerce
C/O Festival Beef Committee
89 Public Square
Monmouth, IL 61462

Exhibitor's Name _____

Phone Number _____

Mailing Address _____

City _____ State _____ Zip _____

School Name _____

Entry must be made by August 31, 2018

A late entry fee will be charged an office fee of \$12/entry.

Entry Fee \$20.00 Total Amount Enclosed \$ _____

All entries must have been weighed in at local 4-H or FFA weigh-in day and shown at their local 4-H, FFA or State Fair.

Description of Animal:

1. _____

4-H or FFA Tattoo # _____ Beginning weight _____ lbs.

All entries must be terminated at the conclusion of the sale.

VIDEO AUCTION

**Thursday, September 6, 2018 - 6:00 PM
at the American Legion in Monmouth**

1. Steers shown are to be terminated at the conclusion of the sale.
2. A 4% commission will be deducted from those steers Sold in the auction.



**TEAR DOWN AND CLEAN-UP
FRIDAY MORNING**

**ALL EXHIBITORS
ARE REQUIRED TO HELP!**



CELEBRATE CHANGE

2018

STEER SHOW RULES

- 1) The show is open to any boy or girl who lives in Warren County or attends a Warren County school as of January 1st of the year the fair is held.
- 2) Animals shown in the steer show must be the property of the boy or girl showing them, weighed in at their local 4-H or FFA weigh-in day, and shown at a local 4-H, FFA or State Fair.
- 3) All entries must be on the grounds by 10:00 am, Wednesday, September 5, 2018.
- 4) All steers shown are to be terminated at the conclusion of the sale.
- 5) Every animal upon the grounds and entered for premiums will, during the fair, be under the control of the Beef Committee. All possible care of animals will be taken by Committee but the Committee will in no case be responsible for any damages that may occur.
- 6) A premium will not be awarded for the animal to be thought not worthy, although there be no competition.
- 7) All animals must comply with State of Illinois health rules.
- 8) All animals must be shown to receive a premium.
- 9) All animals must be entered in their proper class.
- 10) All animals must be shown by the exhibitor.
- 11) No exhibitor will be allowed more than one entry in the singles classes.
- 12) No feeding of animals will be allowed on the grounds outside of the buildings.
- 13) No paper bedding will be allowed.
- 14) Awards will be made by a qualified judge.
- 15) The Beef Committee has the right to reject any animal showing signs of disease.

RULES AND REGULATIONS PRIME BEEF STEER SHOW

- 1) All steer entries must be made by Friday, August 31, 2018. A late entry will be charged an office fee of \$12 until September 4, 2018.
There will be no entries accepted after the 4th.
- 2) No entry refund to non-winners.
- 3) All entries must be accompanied by full payment of entry fee.
- 4) The Beef Committee reserves the right to reject any or all disputes.
- 5) The decision of the Beef Committee will be final in all disputes.
- 6) Any exhibitor who, upon the suggestion of the Beef Committee, shall be found guilty of finding fault with the decision of the judge, can be excluded from exhibiting.
- 7) No person shall act as judge in any class in which they are an exhibitor.
- 8) All protests must be in writing and a \$25 deposit must accompany it.
- 9) Trophies, plaques or ribbons may be awarded at the discretion of the Beef Committee.
- 10) There will be no Tie Outs.

STEER SHOW CLASSES

1. Pen of four steers (Festival Distribution)
2. Single out of pen
3. Light Weight Singles (Festival Distribution)
4. Heavy Weight Singles (Festival Distribution)
5. Light Weight Steer
6. Heavy Weight Steer

PREMIUMS

1st - \$25 2nd - \$20 3rd - \$15 4th - \$10
5th - \$8 6th - \$8 7th - \$8 8th - \$8

Grand Champion Steer \$50 and trophy
Reserve Champion Steer \$25 and trophy

Additional:

- 1) Classes may be changed according to the number of entries.
- 2) Only one entry per exhibitor allowed to show and sale.
- 3) Showmanship will follow the cattle show.